



REGISTERING TO VOTE IS IMPORTANT:

So you can have your say!


To help your credit rating!

To help with fraud prevention!

Only around one third of young people in Central Scotland are registered to vote.

Being registered is important so you can have your voice heard, but there are other benefits too! The electoral register is used for fraud prevention and credit checking.

This means that finance companies use it when they decide who can get things like a loan or phone contract. There are still benefits even if you decide not to vote!



KEEP IN TOUCH

Contact us and follow our socials:

Central Scotland Valuation Joint Board
Ground Floor Right
Glendevon House
The Castle Business Park
Stirling
FK9 4TZ

Telephone: 01786 892289
Email: registration@centralscotland-vjb.gov.uk
www.centralscotland-vjb.gov.uk



x - @ero_central
Instagram - @erocentral
Facebook - ERO Facebook Page

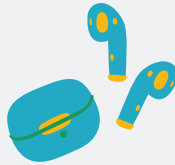


GET READY TO VOTE!

A guide for young people
who can vote for the
first time.



14-18 YEARS OLD?



Young people living in Scotland can vote from the age of 16 onwards.

You can register to vote as soon as you turn 14.

Registering to vote means signing up to have your name on the electoral register after you turn 16.

The electoral register is a list of everyone who is registered to vote. It is updated once a month, which means you need to register in advance. You can't decide to register on the day you want to vote.



WHAT HAPPENS WHEN YOU REGISTER?

You give your details, and they are checked against school or government records to establish that you are a real person who is eligible to vote.



You make some choices about how you will vote and if you would like to be on the open register.

The open register is a version of the register which companies and charities can buy so they can send adverts to people. No one under 16 is on this register, but you can choose to add your name later if you like.

Ways you can vote

You can choose to vote in three different ways:

In person

You go along to the polling station on the day and physically cast your vote.

By Post

You receive your vote in the mail and post it back before the election day.

By Proxy

You tell us the name of someone you trust who you've chosen to go to the polling station if you can't go. Anyone can do this for a single election, but there are strict rules about who can have a permanent proxy vote, usually to do with work or disabilities.